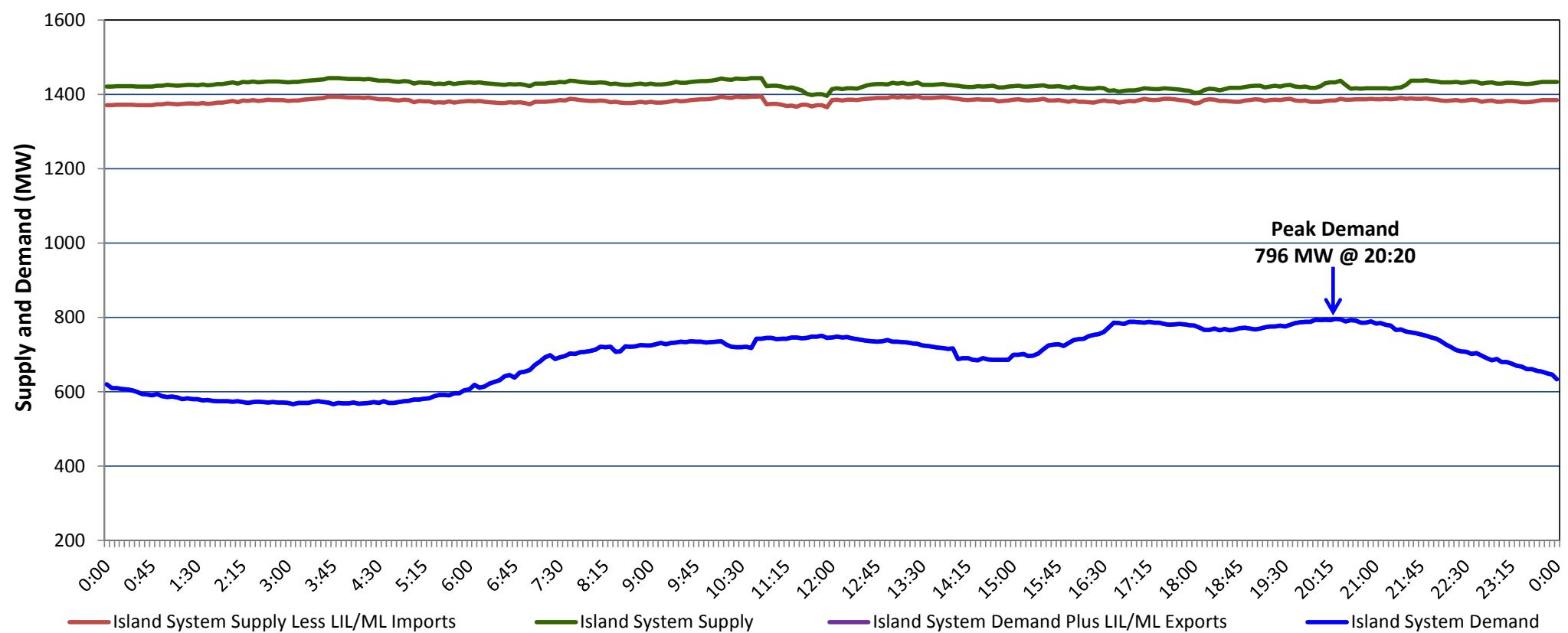


**Newfoundland Labrador Hydro (NLH)
Supply and Demand Status Report Filed Friday, September 13, 2019**

**Section 1
Island Interconnected System Supply, Demand & Exports
Actual 24 Hour System Performance For Thursday, September 12, 2019**



Supply Notes For September 12, 2019

- A As of 1303 hours, May 26, 2019, Bay d'Espoir Unit 7 unavailable due to planned outage (153.4 MW).
- B As of 0800 hours, July 29, 2019, Holyrood Unit 1 unavailable due to planned outage (170 MW).
- C As of 1150 hours, August 18, 2019, Hinds Lake Unit unavailable due to planned outage (75 MW).
- D As of 1300 hours, August 28, 2019, Stephenville Gas Turbine available at 25 MW (50 MW).
- E As of 1903 hours, September 11, 2019, Holyrood Unit 3 unavailable due to planned outage (150 MW).

**Section 2
Island Interconnected Supply and Demand**

Fri, Sep 13, 2019	Island System Outlook ³	Seven-Day Forecast	Temperature (°C)		Island System Daily Peak Demand (MW)	
			Morning	Evening	Forecast	Adjusted ⁷
Available Island System Supply: ⁵	1,429 MW	Friday, September 13, 2019	8	7	860	860
NLH Island Generation: ⁴	1,120 MW	Saturday, September 14, 2019	9	8	840	840
NLH Island Power Purchases: ⁶	70 MW	Sunday, September 15, 2019	11	14	780	780
Other Island Generation:	190 MW	Monday, September 16, 2019	15	14	855	855
ML/LIL Imports:	49 MW	Tuesday, September 17, 2019	13	8	975	975
Current St. John's Temperature & Windchill:	7 °C	Wednesday, September 18, 2019	6	6	1,025	1,025
7-Day Island Peak Demand Forecast:	1,025 MW	Thursday, September 19, 2019	9	12	960	960

Supply Notes For September 13, 2019

- Notes:
1. Generation outages for running and corrective maintenance are included. These are not unusual for power system operations. They generally do not impact customer supply. The power system operators schedule outages to system equipment whenever possible to coincide with periods when customer demands are low and sufficient supply reserves are available. However, from time to time equipment outages are necessary and reserves may be impacted.
 2. Due to the Island system having no synchronous connections to the larger North American grid, when there is a sudden loss of large generating units there may be a requirement for some customer's load to be interrupted for short periods to bring generation output equal to customer demand. This automatic action of power system protection, referred to as under frequency load shedding (UFLS), is necessary to ensure the integrity and reliability of system equipment. Under frequency events have typically occurred 5 to 8 times per year on the Island Interconnected System and the resultant customer load interruptions are generally less than 30 minutes. With the activation of the Maritime Link frequency controller during the winter of 2018, UFLS events have occurred less frequently.
 3. As of 0800 Hours.
 4. Gross output including station service at Holyrood (24.5 MW) and improved NLH hydraulic output due to water levels (35 MW).
 5. Gross output from all Island sources (including Note 4).
 6. NLH Island Power Purchases include: CBPP Co-Gen, Nalcor Exploits, Rattle Brook, Star Lake, Wind Generation and capacity assistance (when applicable).
 7. Adjusted for curtailable load, market activities and the impact of voltage reduction when applicable.

**Section 3
Island Peak Demand Information
Previous Day Actual Peak and Current Day Forecast Peak**

Thu, Sep 12, 2019	Actual Island Peak Demand ⁸	20:20	796 MW
Fri, Sep 13, 2019	Forecast Island Peak Demand		860 MW

- Notes: 8. Island Demand / LIL / ML Exports (where applicable) is supplied by NLH generation and purchases, plus generation owned and operated by Newfoundland Power and Corner Brook Pulp & Paper (Deer Lake Power, DLP).